

SHUTTERS BY

*Sixth Avenue*

Exclusive distributors of



Natural Window Fashions

# ABOUT EXUS SHUTTERS®

Exus, Inc. and its parent company have delivered quality window treatment products for more than 15 years to wholesalers and retailers worldwide.



Professional craftsmen make our beautiful plantation shutters from North American furniture grade basswood and finish them in multiple step processes.

Each Exus shutter undergoes a rigorous 38 point quality control inspection at various stations throughout the production cycle.



We use the most advanced machinery and technology available in the world today. It is our belief that our dedication to innovation in products and processes set us apart from any other shutter supplier on the planet.

Exus offers shutters in many shapes and forms; Multi-fold panels, ByPass, Bi-Fold, Café style, Arches, Eyebrow, Circles, Octagons and Regular Squares.

In addition, you can choose from a wide variety of standard paints and stains, but if this is not enough, custom colors are also available.





State of the art finishing processes with each paint booth equipped with a waterfall over spray and residue attraction system and an ozone safe emissions filtration system that

releases clean air and water back into the environment.

After painting, each shutter is placed on a conveyer system that is also air filtered and heat lamps actually bake the finish.

We purchase our lumber from environmentally responsible harvesters of sustainable forests in the USA.

Wood is the most eco-friendly building material and when harvested and replenished responsibly, the environmental footprint is lessened to an even greater degree.



All of our lumber is weather treated and then stored in a climate controlled area at our factory for a 9 month period prior to being subjected to an electronic kiln drying process that removes

any unwanted moisture that may cause warping. This allows for a strong and durable finished product guaranteed to last for years.



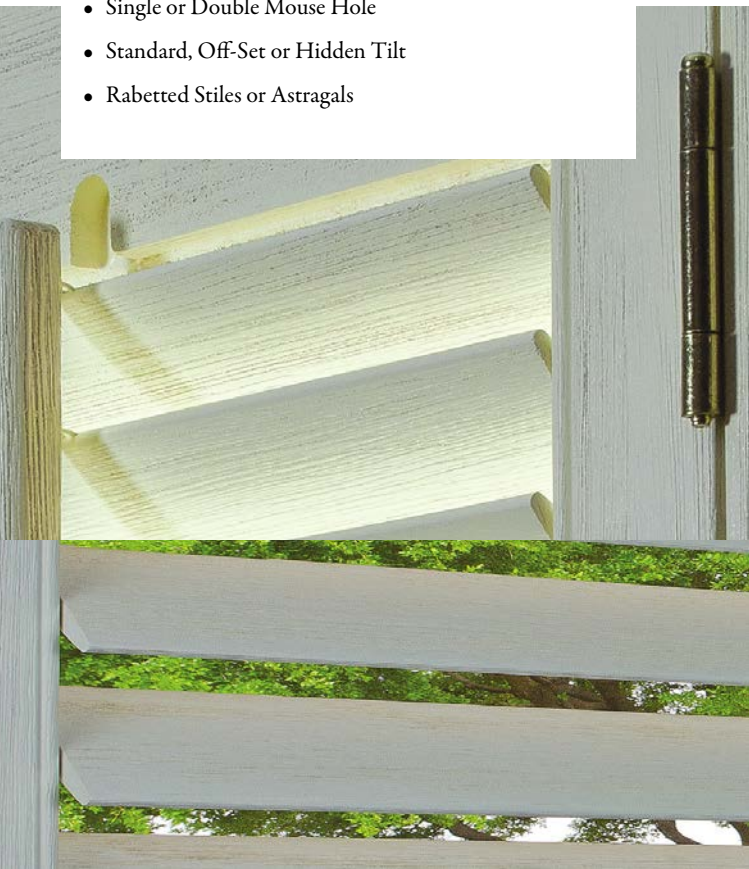


- Finest furniture grade American Bass Wood
- 12 Standard Paints and 18 Standard Stains.
- Custom Paints and Stains. Please Provide Sample.
- 12 Frame Options to Choose From
- Any Specialty Shape
- French Door Cut-Outs or Notch-Outs
- 7 Hinge Colors to Choose From
- Hidden Hinges Available: Chrome and Bright Brass
- Liberty Arch
- Single or Double Mouse Hole
- Standard, Off-Set or Hidden Tilt
- Rabatted Stiles or Astragals





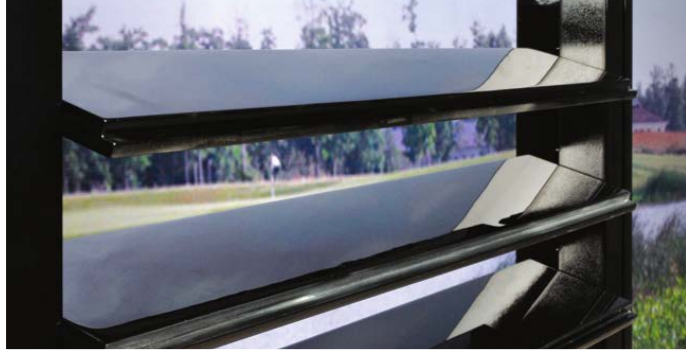
- Wire Brushed Texture
- 12 Standard Paints and 18 Standard Stains.
- Custom Paints and Stains. Please Provide Sample.
- 12 Frame Options to Choose From
- Any Specialty Shape
- French Door Cut-Outs or Notch-Outs
- 7 Hinge Colors to Choose From
- Hidden Hinges Available: Chrome and Bright Brass
- Liberty Arch
- Single or Double Mouse Hole
- Standard, Off-Set or Hidden Tilt
- Rabetted Stiles or Astragals





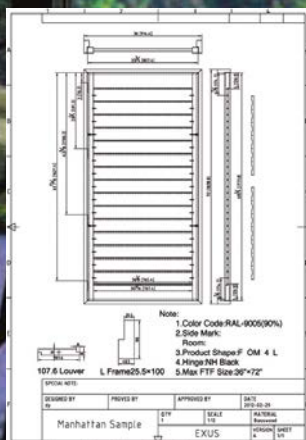


- Hand Selected Knotty North American Basswood
- 6 Standard Stains: Fruitwood, Dark Teak, Brazilnut, Rose, Bright Cherry, Light Brown
- Custom Stain Available. Please Provide Sample.
- 12 Frame Options to Choose From
- Any Specialty Shape
- French Door Cut-Outs or Notch-Outs
- 7 Hinge Colors to Choose From
- Hidden Hinges Available: Chrome and Bright Brass
- Liberty Arch Available
- Single or Double Mouse Hole
- Standard, Off-Set or Hidden Tilt
- Rabbeted Stiles or Astragals



# Manhattan™

- High Gloss Piano Finish
- Available in 2 Standard Colors (Black and White)
- 60mm & 84mm Louvers
- Flat Rabbeted Interlocking Louvers
- Frame: Flat L.
- Specialty Shapes Available
- North American Basswood
- Hidden Tilt Only (Large Wooden Hidden Tilt Rod)





- North American Basswood
- Custom Mixture of Paint and Stain.  
Please Provide Sample
- 12 Frame Options to Choose From
- Any Specialty Shape
- French Door Cut-Outs or Notch-Outs
- 7 Hinge Colors to Choose From
- Hidden Hinges Available: Chrome and Bright Brass
- Liberty Arch Available
- Single or Double Mouse Hole
- Standard, Off-Set or Hidden Tilt
- Rabbeted Stiles or Astragals







- Hand Selected and Distressed North American Basswood
- Custom Paint and/or Custom Stain.  
Please Provide Sample
- Light Distress: Worm Holes, Hand Scraped, Cabinet Style Stained Finish
- Heavy Distress: Worm Holes, Hand Scraped, Faux Texture Added, Worn Louver, Stile and Frame Corners
- 12 Frame Options to Choose From
- Any Specialty Shape
- French Door Cut-Outs or Notch-Outs
- 7 Hinge Colors to Choose From
- Hidden Hinges Available: Chrome and Bright Brass
- Liberty Arch is Standard / Minimum Panel Width is 250mm
- Single or Double Mouse Hole
- Standard, Off-Set or Hidden Tilt
- Rabbeted Stiles or Astragals

# EXUS SHUTTERS OPTIONS



*Bi-Fold*



*ByPass*



*Half Brow*



*Eye Brow with  
Horizontal Louvres*



*Sunburst Eyebrow*



*Sunburst Half-circle*



*Half-circle with  
Horizontal Louvres*



*Offset Tilt*



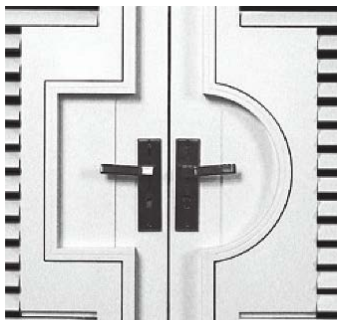
*Standard Tilt*



*Hidden Tilt*



*Double Hung with Horizontal T-Post*



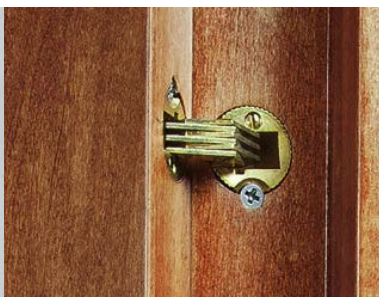
*Door Cut Out*




*Door Knotch Out*



*Deco Sill Cover*



*Hidden Hinge*



SHUTTERS BY

*Sixth Avenue*

HEAD OFFICE

15 Sydenham Rd,  
Norwood SA 5067

Ph: 08 8332 2203

Fx: 08 8362 2982

*Scott*

0410 585 441

*Paul*

0427 009 790

[sales@sixthavenueshutters.com.au](mailto:sales@sixthavenueshutters.com.au)



NEW SOUTH WALES

*Daniel Galati*

Ph: 02 8097 9042

Fx: 02 8580 5321

Daniel

0410 475 051

[daniel@sixthavenueshutters.com.au](mailto:daniel@sixthavenueshutters.com.au)

*[sixthavenueshutters.com.au](http://sixthavenueshutters.com.au)*